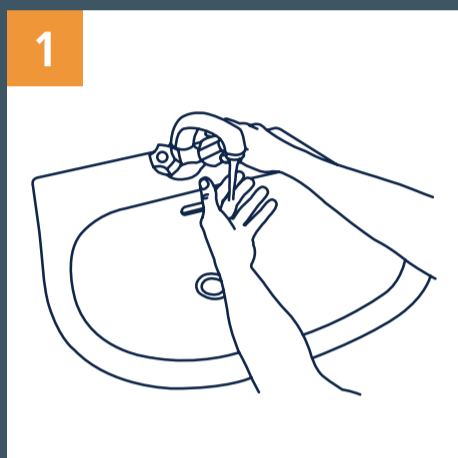


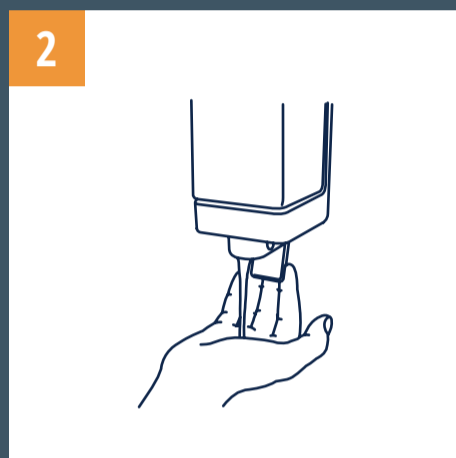
Hand Hygiene

Protect yourself and others from the spread of illnesses. It is important to wash your hands:

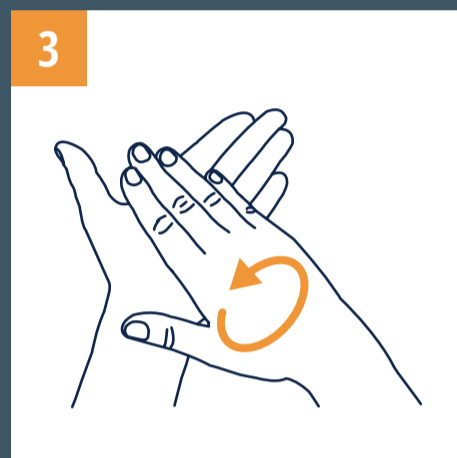
- After coughing or sneezing
- When caring for the sick
- Before, during and after you prepare food
- Before eating
- After toilet use
- When hands are visibly dirty
- After handling animals or animal waste



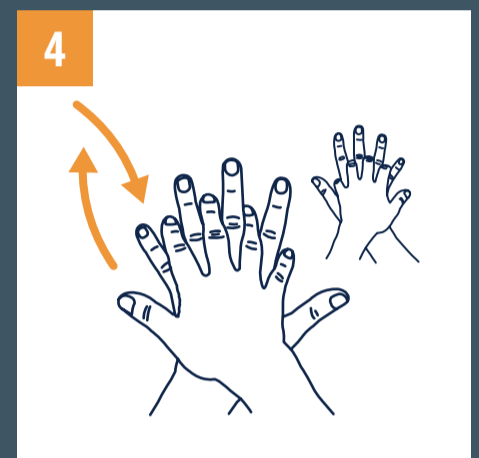
Wet hands with water



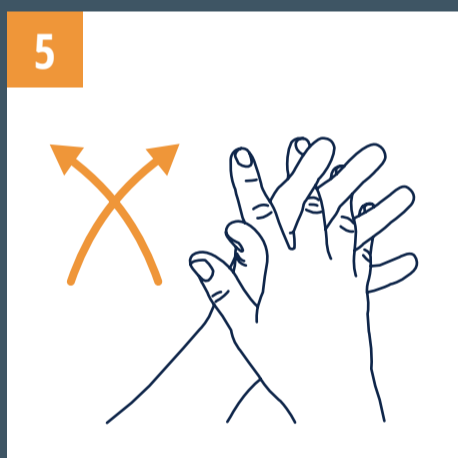
Apply enough soap to cover all hand surfaces



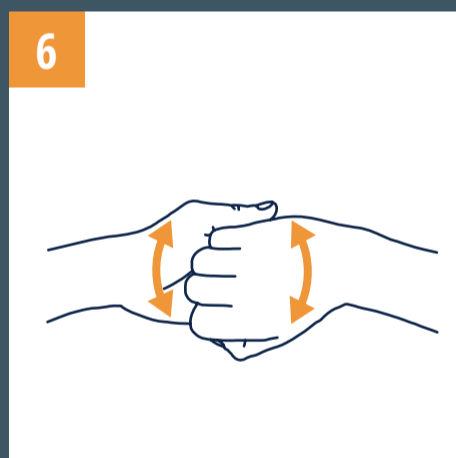
Rub hands palm to palm



Right palm over left dorsum with interlaced fingers and vice versa



Palm to palm with fingers interlaced



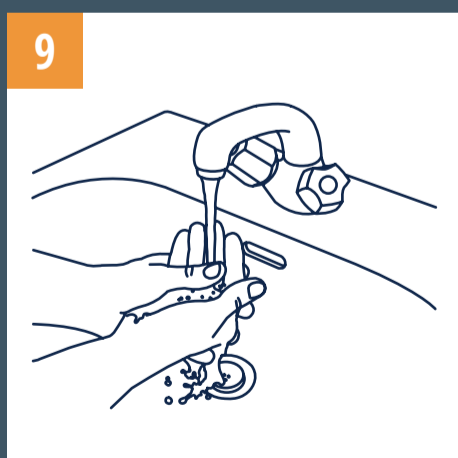
Backs of fingers to opposing palms with fingers interlocked



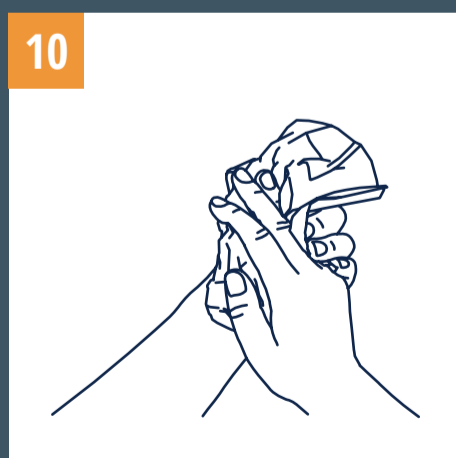
Rotational rubbing of left thumb clasped in right palm and vice versa



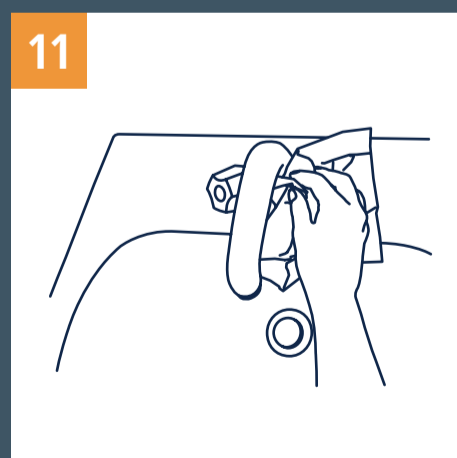
Rotational rubbing, backwards and forwards with clasped fingers of right hand in left palm and vice versa



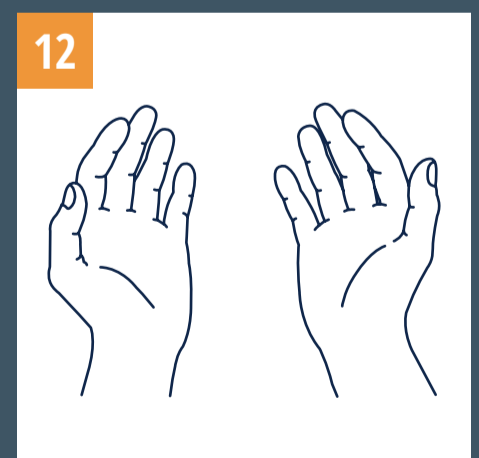
Rinse hands with water



Dry thoroughly with single use towel



Use towel to turn off faucet



... and your hands are safe



Duration of the entire procedure: 40-60 seconds



Chamber of Commerce
and Industry WA